



TOUCAN ECO III

Instruction Manual



ECO CLEANING & DISINFECTION SYSTEM



Protecting people and the environment



Leader in Electro Chemical Activation Systems & Solutions



CONTENTS:

Section 1.0	Introduction and Notice
Section 2.0	Parts Supplied With The Unit
Section 3.0	Uses
3.1	Use
3.2	Usage
3.3	How To Use and Activate the Toucan III Unit
Section 4.0	Safety Instructions
4.1	Caution Use Only As Directed
4.2	Directions for Safe Use
4.3	Water quality
Section 5.0	Important Information Section
5.1	Important information
Section 6.0	Trouble shooting Section
Section 7.0	Product Maintenance
7.1	Maintenance of the body
7.2	Drying and storage
7.3	Cleaning the inside of the device
7.4	Warranty
Section 8.0	Product Specification
8.1	Product
8.2	Accreditations
8.3	Certified

Section 1.0 Introduction and Notice



Congratulations on the purchase of your Toucan Eco III.

Each unit is manufactured to ensure safety and reliability. Before using this unit for the first time, please read this instruction manual carefully and keep it for future reference. These instructions will show you how to use the Toucan Eco III unit safely and protect you from danger or damaging the unit.

Notice for customers in the countries applying EU or EPA Directives. This product has been tested and found compliant with the limits set out in the EMC and EPA Directive and is fully CE compliant.



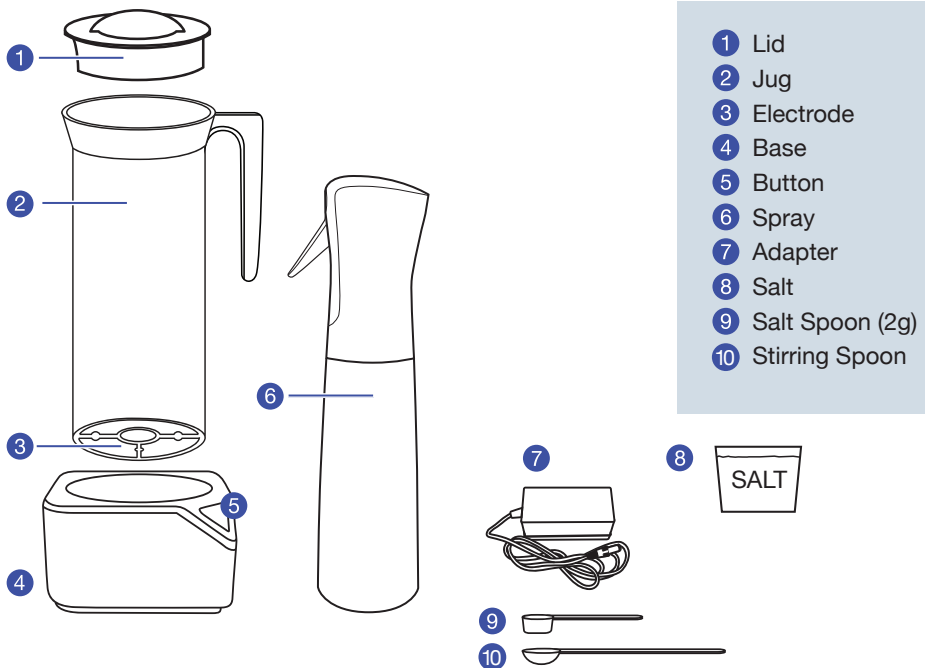
Section 2.0 Parts Supplied With The Unit

- Jug for activation 1000ml (1 litre)
- Base station (press button once: 5 min activation cycle / auto control)
- Transformer and Power Supply (Input 100~240V 50~60Hz, Output DC 9V 3A)
- Salt Measuring Spoon (2gm)
- Portable Spray Bottle
- Salt additive (Starter Kit)
- Long spoon for mixing additives

Spray Dispenser

- Fine mist spray delivers excellent coverage for a multitude of surfaces
- Propellant free
- Continuous spray - large areas are covered quickly and evenly

The following images of the product might be slightly different from the one supplied.



Section 3.0 Uses

3.1 Use

- Toucan Eco III disinfectant is generated from natural salt dissolved in tap water, and activated in the Toucan Eco III unit through Electro Chemical Activation.
- You can make 1000ml of high-level Hypochlorous containing solution in 5 minutes using just 2 grams of salt!
- Activation generates solutions with hypochlorous acid active substance for easy home and commercial use to clean, disinfect and deodorise various goods and articles using natural and sustainable solutions.



3.2 Usage

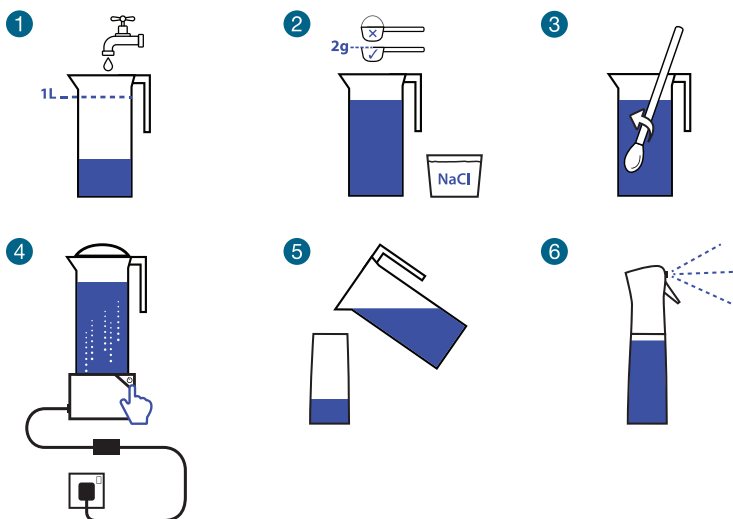
- Cleaning - will clean hard surfaces leaving smear free finish
- Cleaning - will clean fabrics, removing stains and marks
- 99.99% disinfection - kills 99.99% of microorganisms including bacteria, viruses, spores, fungi and moulds
- Deodorisation - will reduce odours on hard surfaces and fabrics
- Totally safe to use - non-toxic, non-hazardous, non-allergenic



3.3 How to use and activate the Toucan Eco III Unit

- 1 Fill the jug with tap water to the 1 litre mark. The water should be between 5 to 35° C, and do not use purified water
- 2 Add 2g of table salt - that's a flat measure using the short measuring spoon provided. No more or less as this affects the electrolysis. If too much salt is added, rinse out the jug and start again. Do not use rock salt.
- 3 Stir the solution with the long spoon at least 8 times in the centre of the jug to fully dissolve the salt. The salt acts as an electrolyte and if it accumulates on the electrode the product will not work. Place the lid on the jug, and wipe any water away from the electrodes on the bottom of the jug.
- 4 Connect the adapter to the base unit, plug into a wall socket and turn the power on at the wall. The base will beep and light flash twice.
- 5 Place the jug on its base. The base will beep once and the white button will remain lit. Activate the solution by pressing the button once. After 3 seconds the base light will flash and beep, the jug will light up blue and microbubbles appear as electrolysis begins.
- 6 After 5 minutes the base beeps, blue jug and white button lights stay on, and solution stops bubbling. It's now ready to use and pour into the bottle. After 3 minutes you can activate again, indicated by a beep and lights switching off. This prevents the device from overheating.
- 7 Use the solution to safely spray, wipe or mop any surface clean and germ free. It can also be used as a deodoriser by killing the germs that creates the smell.

NOTE: For IMPORTANT information regarding correct usage - see [Section 5](#)



Section 4.0 Safety Instructions

4.1 Caution Use Only As Directed

- Use only for surface and fabric cleaning, disinfection and deodorisation.
- DO NOT use in an enclosed space. Use only in a well-ventilated area.
- DO NOT spray into your eyes. In case of contact with eyes, rinse immediately with plenty of water and seek medical advice.
- DO NOT swallow the activated solution. If swallowed, seek medical advice.
- DO NOT use this unit and activated solution near fire.
- Wash hands after use. People with sensitive or damaged skin should avoid prolonged contact with the product.
- Keep out of the reach of children and pets.

4.2 Directions for Safe Use

- DO NOT overfill or under-fill the jug.
- Use only 2 grams of salt in 1 litre of water. This is 1 level measuring spoon. Dissolve salt in the water by mixing thoroughly.
- DO NOT add too much additive (salt) – the device will automatically stop if excessive salt is used.
- Use the recommended additives only in the quantities stated.
- DO NOT move the unit during operation.
- STORE SAFELY – Do not keep the activated water in the refrigerator where it can be confused with drinking water.
- Produce only as much fluid as necessary and use as instructed. Use activated solutions within 24 hours – sterilising and deodorising power is reduced gradually over time.
- Unused solutions can be disposed in a sink. Unused solutions can also be reactivated, restoring the disinfection, cleaning and deodorising power.
- Unplug the base from the power supply after use.
- Avoid direct exposure of the unit to the sun. This might cause fire or damage.
- DO NOT use ground water, polluted water or excessively hard water to fill the bottle or jug.
- Use water of temperature ranges from 5°C to 40°C.

4.3 Water quality

- The water supply MUST be from normal tap water with appropriate hardness.
- Use water with a pH range of pH6 - pH8, and a hardness of less than 200 ppm
- Low calcium water is recommended.
- DO NOT use ground water, polluted water or excessively hard water.
- Water temperature range: 5°C to 40°C only

Section 5.0 Important Information

5.1 Important Information

- ALWAYS make sure that the base of the jug and the electrodes in the base unit are clean and dry before activation
- DO NOT activate or reactive the solution within 3 minutes of the previous activation
- USE only 2grams of salt per litre
- DO NOT use Rock Salt as the additive. Use enclosed additive or ordinary table salt only.
- If the unit does not work, in the first instance make sure you connect the adaptor's power and that the jug is properly seated on the base.
- DO NOT over use additives and do not exceed the reference amount. Put additives and water into jug and stir well to dissolve completely.
- The unit may not work properly if additives are not completely dissolved.
- If you use this unit more than 5 times continuously, the device can stop because its adaptor is overheated and a thermal shutdown circuit is activated automatically.
- In this case, the unit will not work even when the button is pressed. Separate the adaptor jack from the body, cool down the adaptor at least 20 minutes and reconnect. It will then work again.

Excessive use of the device more than 5 times continuously can cause failure of the product through overheating which can invalidate the warranty.

IMPORTANT: Please follow these steps otherwise your unit may shutdown for 3 minutes to reset.

- **After 5 to 7 days pour the solution away and simply make some more.**
- **After use, rinse the jug in cold water, carefully wipe inside and leave to dry**
- **Always use the power adapter and plug supplied.**

X Do not remove the jug from the base until activated. as this may damage the unit.

X Do not dilute or mix with chemicals.

X Do not touch the electrode guard or wipe with excessive force.

X Do not store the solution in the jug

Section 6.0 Trouble shooting

Please read this instruction carefully and use the check list below. Please call your local supplier if a problem persists.

Trouble	Check Point	Remedy
LED lamp won't turn on.	Is the power cord and plug properly connected?	Plug in properly and turn on the unit.
No clear bubbles rising during activation.	Did you put in the salt additive?	During the electrolysis processes, a complex gas with oxygen, hydrogen and chlorine is generated. Therefore NO Bubbles means NO additives. Put the tap water and additives, please try again.
The unit will not activate when the Start Button is pressed after a previous activation cycle	Did the previous activation process finish?	When the activation process is complete, the device will NOT run for the next 3 minutes for safety reasons. Excessive continuous operation more than 5 times also causes safety turn off. Please remove plug from socket outlet and cool down for about 20 minutes.
Device will not operate.	Did the device auto-reset after the 3 minute automatic rest period?	The device won't work during 3 minutes automatic reset.
On pressing the Start Button, there is just a beep, the LED lamp is immediately turned off and device won't work.	Did you put in too much additive?	If additives are used excessively, or not dissolved completely, the device will not run for safety reasons. Please try again after adjusting the amount of additives, or mix again thoroughly.

Section 7.0 Product Maintenance

7.1 Maintenance of the body

Wipe the body and inside of jug with warm damp cloth. Do not use any chemicals or detergent.

7.2 Dry and storage

Please store this product in room temperature or cool place after remove the moisture completely inside of it when unused for long period of time.

7.3 Cleaning the inside of the device

Wipe the inside of jug with warm damp cloth, then put the water and additive in the jug and activate disinfection process.

Do not separate the guard which protects the MESH electrode and do not wipe it with excessive force.

7.4 Warranty

Your product is covered by a warranty through your supplier; however some claims resulting from misuse or careless use will not be covered by the warranty.

The standard warranty covers the base station and power transformer (excluding fuses) for 1 year. The spray bottle and jug are covered for 1 year when you use average 5 times a day.

Replacements are available to purchase from your supplier or directly via:

<https://centregoltd.com>

For full details of the warranty in your particular country please consult your local supplier. All claims must be conducted through your supplier.

Section 8.0 Product Specification

8.1 Product

- Product Name : Electrolysis method Hypochlorous acid solution generator
- Model Name : Centrego Toucan Eco III
- Appearance of the product : Slight acidic Hypochlorous acid (HOCl) 50-200ppm FAC with /pH7.0 - pH8.2
- Rated Voltage : Input AC220V 60Hz Output DC 9V 3A
- Size: 130 x 130 x 280 (mm)
- Capacity: maximum 1000ml
- Power Consumption : 27W
- Material : ABS + PP + IR
- In partnership with Ecowell

8.2 Accreditations

- EN 1276
- EN 13624
- EN 13697
- EN 13727
- EN 1656

8.3 Certified

- VAH Certified
- BAUA Registration
- EPA Approved
- CE
- NF T 72-281
- EU Biocides Regulations No:528/2012 Article 95 listed





Leader in Electro Chemical Activation Systems & Solutions

Centrego Limited, Unit N4 Marshall Way,
Frome, Somerset, BA11 3RG, United Kingdom.
Tel: +44 (0)1373 470638

www.centregold.com

23/06/20